

BEAVER SALES



REMANUFACTURING PLANT

It can run 75,000+ fbm per day currently one 1 shift. We were producing all our profiling products on this line including interior paneling, exterior siding, softwood flooring, decking, ESLP boards, mouldings, etc.

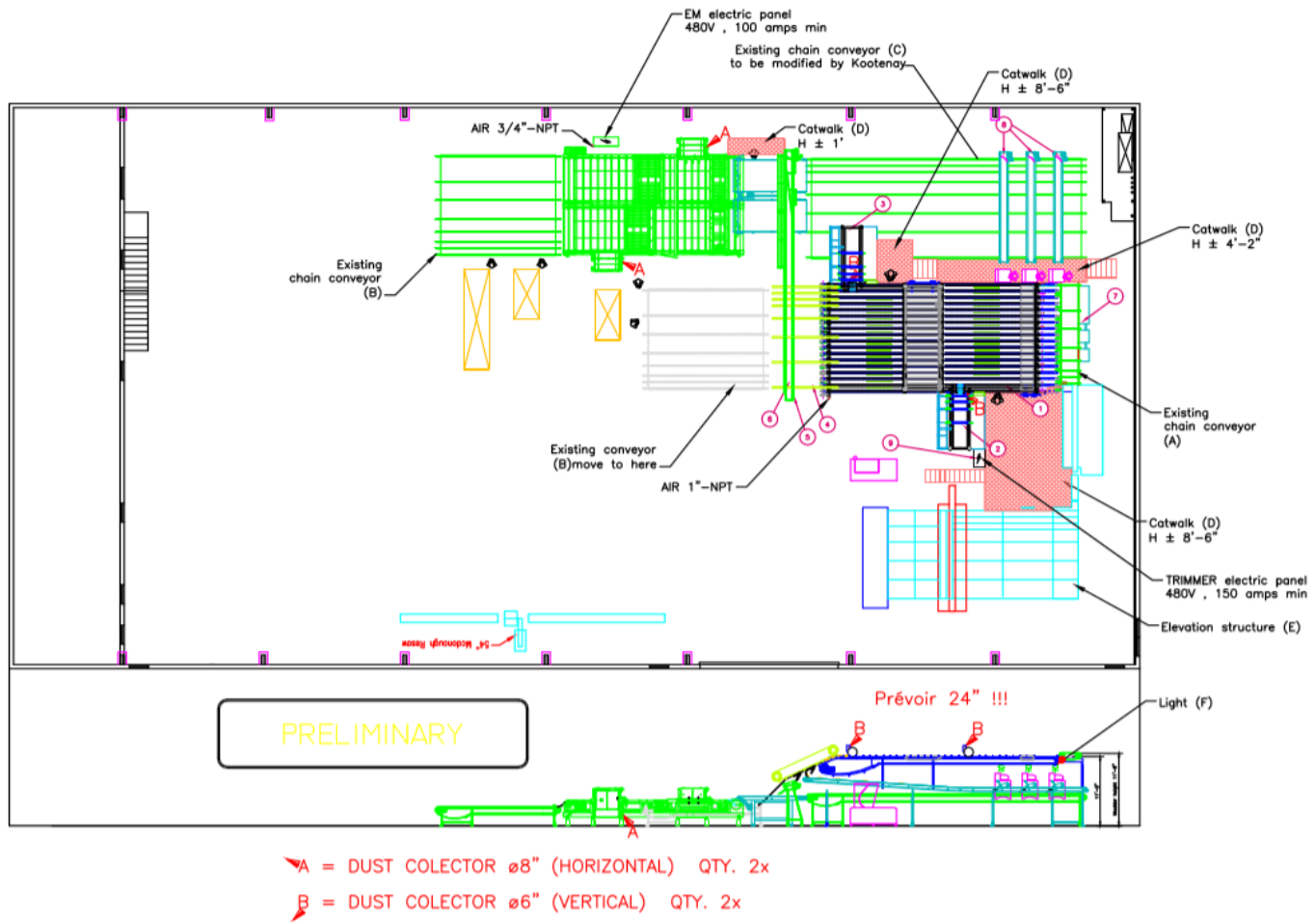
Voltage 480v, 3 phase, 60hz

The current line as it sits is only about 12 years old (moulder is 15 years old), and consists of,

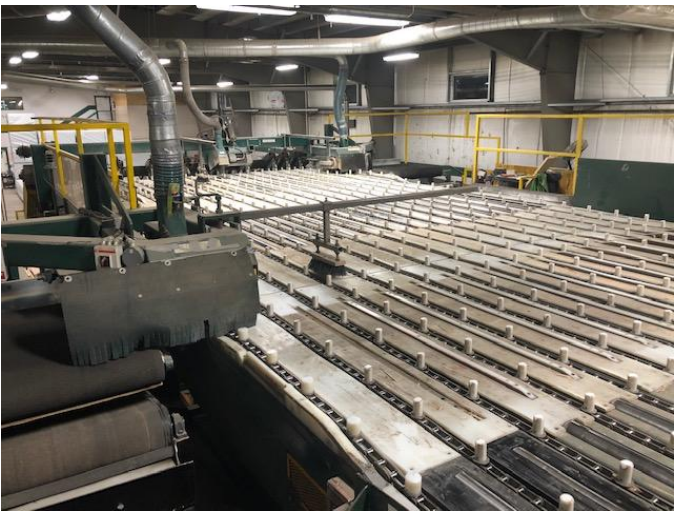
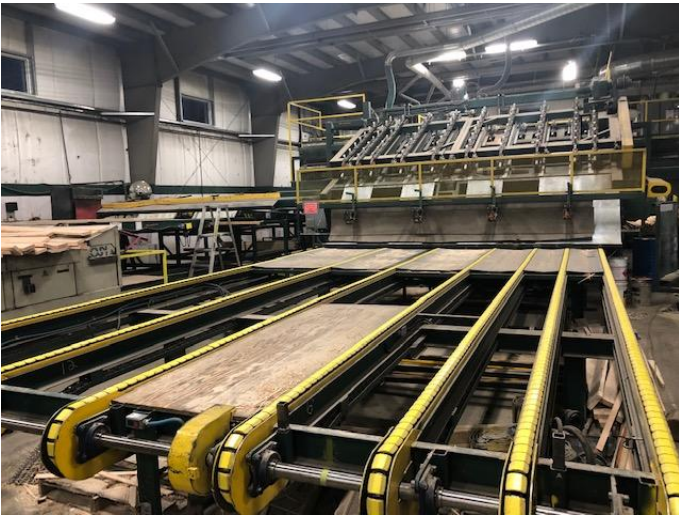
- Weinig Hydromat 23 (8 head unit)
 - Tilt hoist and infeed rolls
 - Infeed deck
 - Ram moulder infeed
- Valley trim deck, 16'
- OSI transverse end matcher with grade mark reader
- Short chain and long chain for piling
- Lots of spare heads, knives, saws for the entire line. As well as spare Weinig parts for the moulder
- Weinig profile grinder and flat knife grinder
- We also have a dust collection bag house on the line that could be included
- We have manuals for most major items
- The reason for shutting down is simply that the company needs to repurpose the building.

Please contact Beaver Sales (Tony Hutnyk) for more information
ttodd@telus.net 1-250-851-1053 www.beaverwoodwaste.com

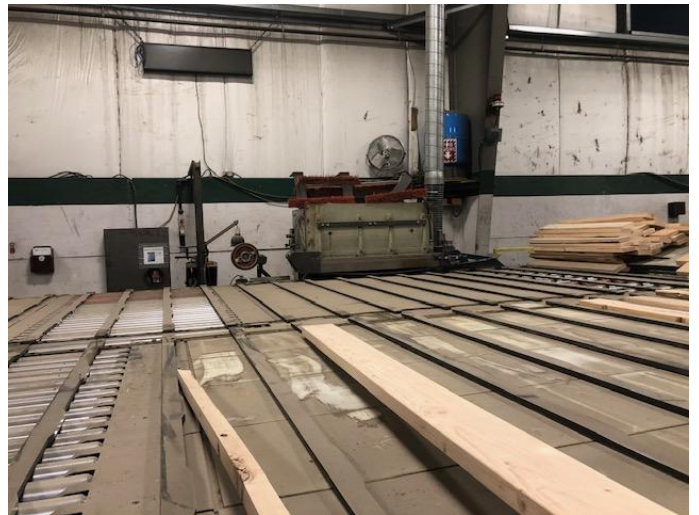
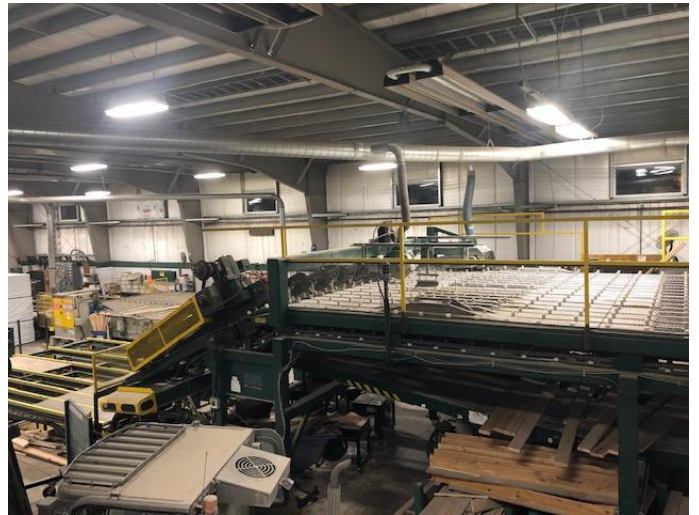
General Layout:



Please contact Beaver Sales (Tony Hutnyk) for more information
 ttodd@telus.net 1-250-851-1053 www.beaverwoodwaste.com



Please contact Beaver Sales (Tony Hutnyk) for more information
 ttodd@telus.net 1-250-851-1053 www.beaverwoodwaste.com



Please contact Beaver Sales (Tony Hutnyk) for more information
ttodd@telus.net 1-250-851-1053 www.beaverwoodwaste.com



Please contact Beaver Sales (Tony Hutnyk) for more information
ttodd@telus.net 1-250-851-1053 www.beaverwoodwaste.com



Please contact Beaver Sales (Tony Hutnyk) for more information
ttodd@telus.net 1-250-851-1053 www.beaverwoodwaste.com